



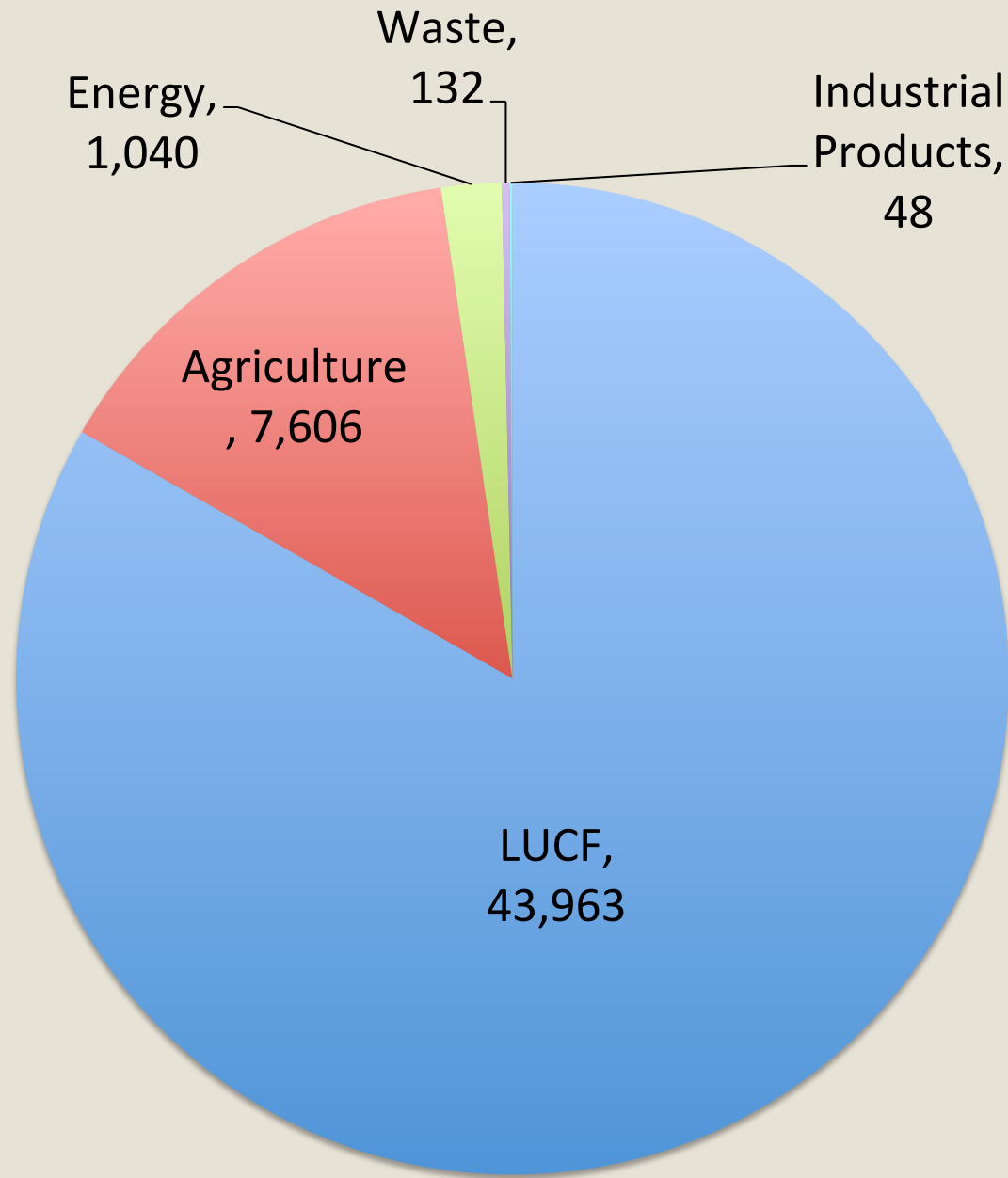
Joint Crediting Mechanism towards Sustainable Low-Carbon Society Development in Laos

Oroth Sengtaheuanghoung
Deputy Director, ALUPC/DALaM

Contents

- GHG Emissions by sector-wise in Laos
- Joint Crediting Mechanism in Laos
 - Cooperation Framework
 - JCM projects (MOEJ and METI, Japan)
 - Statistics of Feasibility Studies in Laos
- Outcomes of NFP workshop in Laos
 - Number of participants
 - Presentations
 - Outcomes of the workshop
- Future prospects and challenges of JCM projects through 3E Nexus initiative

Source of GHG Emissions in Lao PDR



Major Sectors:

Agriculture (14.4 %)

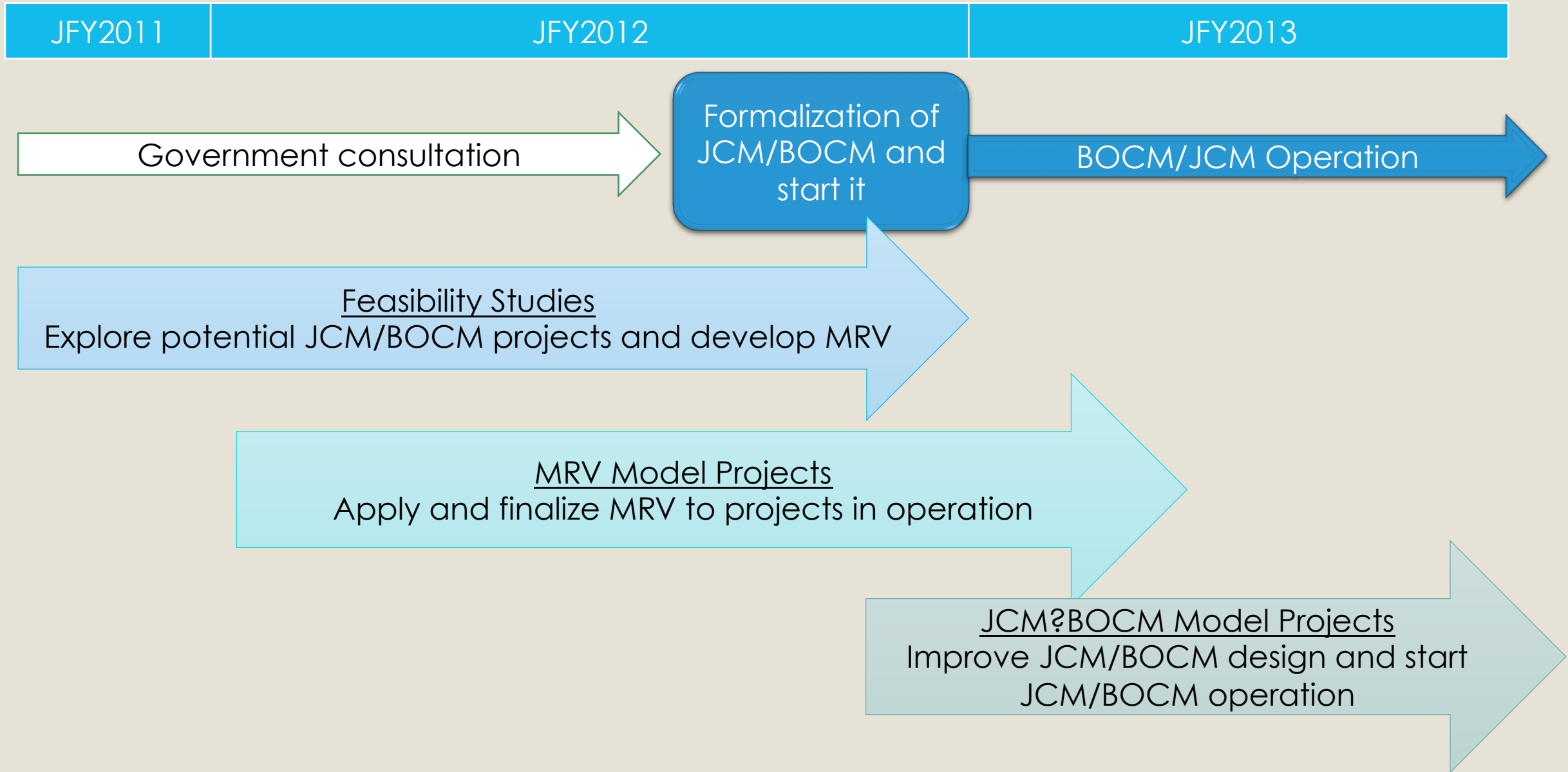
LUCF (83.3 %)

Energy (2.0 %)

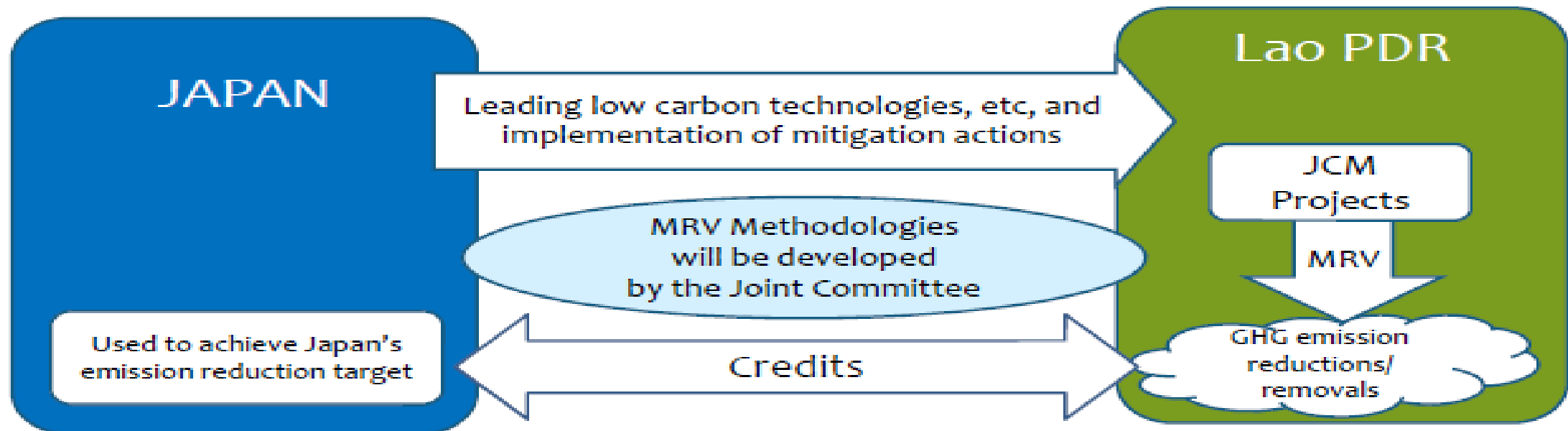
Waste (0.3%)

Industrial Products (0.1 %)

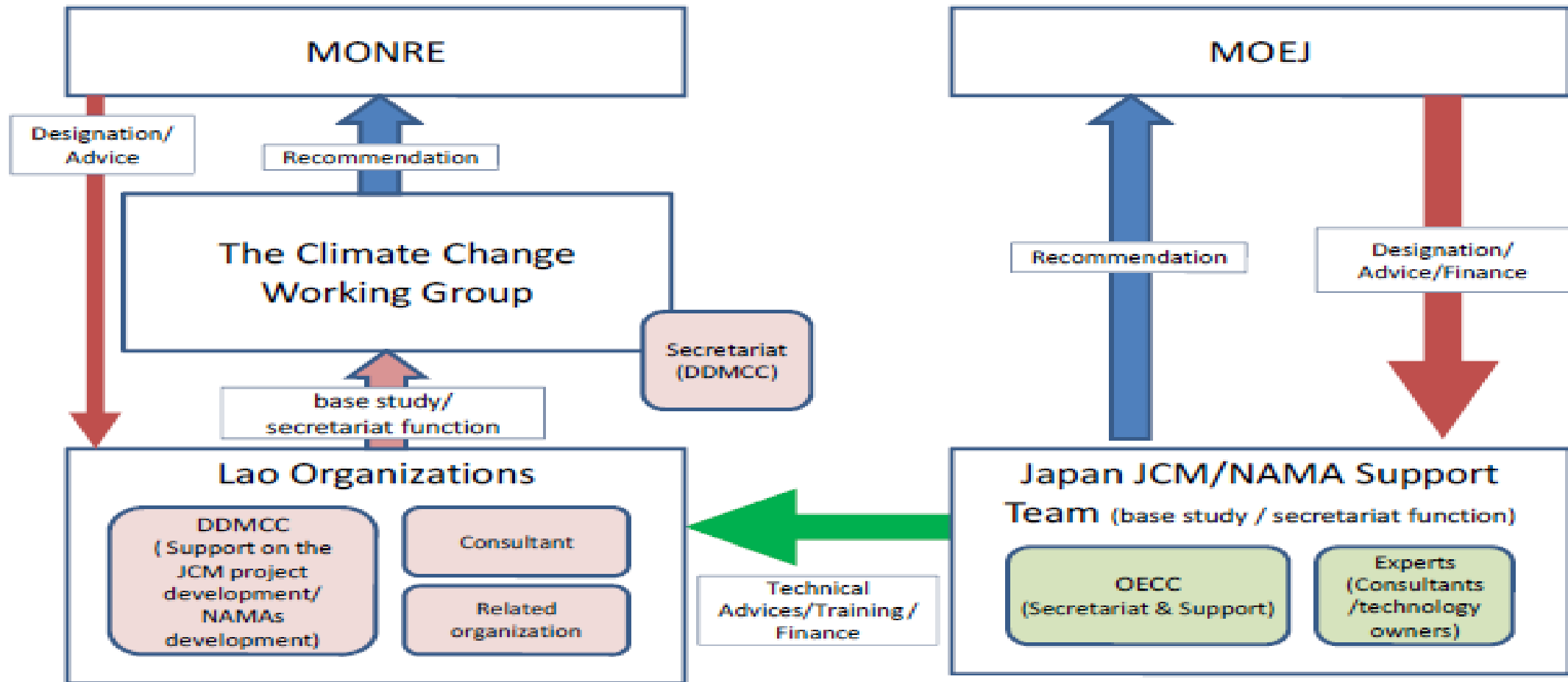
Japanese program to facilitate JCM/BOCM



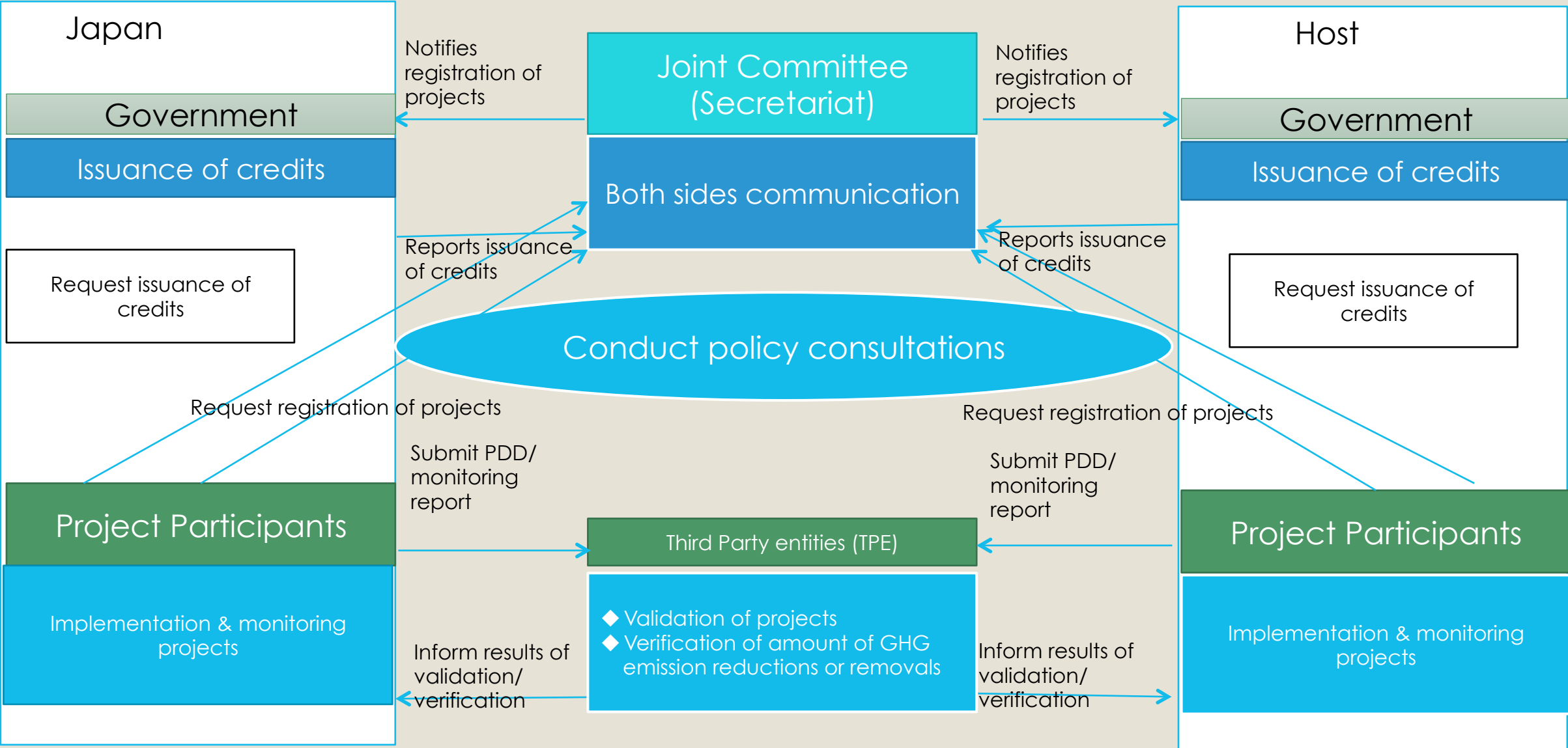
Japan and Lao PDR signed the bilateral document for the Joint Crediting Mechanisms (JCM) on 7th August 2013.



Cooperation Framework for the JCM Project Finding and NAMAs Capacity Building Cooperation Programme



JCM Scheme



Feasibility studies JCM in Lao PDR

Ministry of the Environment, Japan (MOEJ)

- * Biomass Utilization in Cement Kiln (FY2014)
- * REDD+ in Luang Prabang Province (FY2014)
- * City-to-City Cooperation between Vientiane and Kyoto (FY 2014)
- * Promotion of use of electric Vehicles in Vientiane Capital (FY 2013)

Ministry of Economy, Trade and Industry (METI)

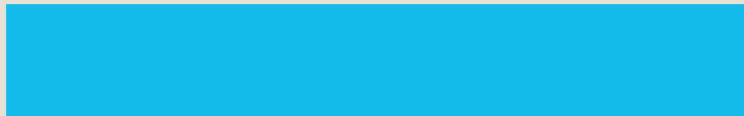
- * Energy saving at beer plant (FY2013)
- * REDD+ (FY2014)
- * Energy efficiency container data center (FY2014)

JCM projects in Laos PDR 2012, 2013, and 2014

2014 (Land use management; Biomass utilization)



2013 (Transportation)



2012 (Transportation; Waste Management)



0 1 2

■ Demonstration ■ Feasibility

For e.g.-1 Feasibility Study Project in Vang Vieng, Vientiane Province, Laos PDR

Biomass Utilization in Cement Kiln

“ By utilizing agricultural biomass in Lao PDR as an alternative fuel to cement manufacturing process, a large CO₂ emission reductions can be achieved, as well as saving coal resources ”

For e.g.-1 REDD+ Demonstration Study in Phonxay District, Luang Prabang

REDD+ in Luang Prabang Province

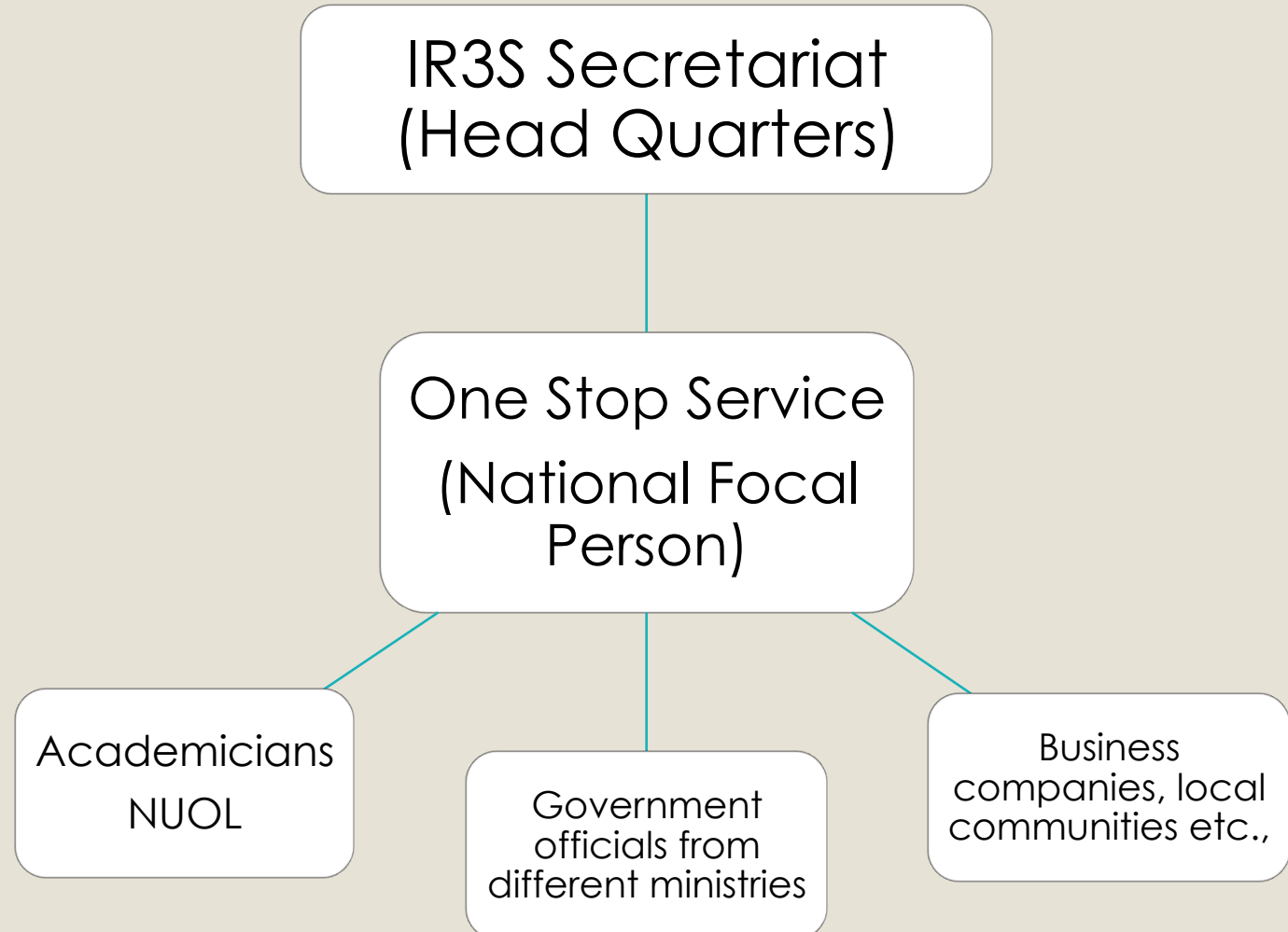
“ This study aims to monitor the effectiveness of REDD+ activities and quantify the amount of GHG emissions reductions by REDD+ activities in a part of Phonxay District, Luang Prabang Province (30,000 ha), a location with severe deforestation and forest degradation mainly due to shifting cultivation.

REDD+ activities will be implemented based on JICA's activities (e.g. introduction of alternative livelihoods) and will be promoted by participatory methods with local people”

Implementation of Domestic Network

Network Consortium (NC)

- Establish a **one stop service**/domestic network consortium (DNC) in each partner country.
- **Capacity building** activities such as a **training and workshops on advanced technologies** for low carbon development.
- Develop a **common platform** to provide educational materials and exchange knowledge.



NFP Workshop outcomes

Number of Participants from different ministries and university

DALaM	Department of Agricultural Land Management
ALUPC	Agricultural Land Use Planning Centre/DALaM
CA-E C	Conservation Agriculture and Ecological Centre/DALaM
NAFRI	National Agricultural and Forestry Research Institute
PRC/NAFRI	Policy Research Centre/NAFRI
P-C D/NAFRI	Planning and Cooperation Division/NAFRI
FRC/NAFRI	Forestry Research Centre/NAFRI
DOF	Department of Forestry
REDD+ office/DOF	Reduce Emission from Deforestation and Degradation
NUOL	National University of Laos
FOF/NUOL	Faculty of Forestry sciences/NUOL
FOA/NUOL	Faculty of Agriculture/NUOL
FOE/NUOL	Faculty of Environment Sciences/NUOL
MOE	Ministry of Education
MOST	Ministry of Sciences and Technology
DTI/MOST	Department of Technology and Innovative/MOST
REMI/MOST	Recycling Energy Management Institute/MOST
MONRE	Ministry of Natural Resources and Environment
DDMCC/MONRE	Department of Disaster Management and Climate Change/ MONRE
PCD/MONRE	Pollution Control Department/MONRE
DEQP/MONRE	Department of Extension of Quality Environment
MOIC	Ministry of Industry and Commerce
DOIH/ MOIC	Department of Industry and Handicraft/MOIC
MOPH	Ministry of Public Health
HHPD/MOPH	Hygiene and Health Promotion Department/MOPH

Total Participants: 29



Q & A Session



Group Photo

Invited Speakers and their presentations

Joint Crediting Mechanism Towards Sustainable Low Carbon Development or REDD+ in Lao PDR by Dr. Savanh Chanthakoummane

1. Policy Towards Low-Carbon in Lao PDR;
2. National REDD+ Framework and Donors Supports to REDD+ in Lao PDR;
3. Progress of REDD+ Activities by Components;
4. Challenges of REDD+

Status of Green growth low-carbon development and Joint credit mechanism in Lao PDR by Dr. Chanh Samone Phongoudome

1. International convention activities
2. Initiative of Green Growth Low Carbon
3. Initiative of Joint Credit Mechanism
4. Future strategies

3E Nexus Initiatives and Joint Crediting Mechanism (JCM) projects for Sustainable Low Carbon Development in Asia- Pacific Region by Dr. Geetha Mohan

1. Introduction of 3E Nexus initiatives
2. Role of One Stop of Service
3. Implementation of 3E Nexus NFP network
4. Joint Crediting Mechanism
5. Statistics of JCM Projects
6. Introduction of MRV and JCM methodology

Outcomes of the workshop

- Need to expand the domestic network
- Invite more resource persons from business persons and other stakeholders includes community persons, NGO's etc.,
- More capacity building activities required to promote JCM and 3E Nexus initiatives.
- Identify key possibility JCM projects under different sectors (energy, forestry and waste etc.,)through Domestic Network

Future prospects and challenges of JCM projects in Laos

- Expand the research network across the local, regional and national level.
- Enhance the capacity building activities: e.g. materials, training programmes on MRV methodologies.
- Identify the more possible JCM projects through the domestic network.
- Try to develop a pilot projects with support of funding agencies and host country.

Thank you for your kind attention